

2009-10 PALS Coordinators

Hospitality/ Start-up

ESHD—Heather Cannon & Jen Hancock

LS—Maureen Anderson & Malin Shibley

MS—Jane Turner

US—Mary Janico & Lynn Salyers

PALS School Store

Kacey McCroskey, Fran Ainsworth, Kimberly Schmidt, Dominique Frascino

Teacher Appreciation

ESFD—Caroline Kelly & Keisha Childress

ESHD –Kim Hoffman

LS– Shelly Duskin & Shannan Gaudette

MS/US– Sandi Cheek & Lin Kennerly

Operation Christmas Child

ESHD– Wendi Sellars & Janet Rhoades

LS– Karen Pardue & Sherrie Boylan

Thankful Tuesday

Mimi Harris & Leigh Ann Bishop

Watch DOGS

Jennifer Aliff & Michelle Bartlett

PALS Cookbook

Meredith Emerson

MS Media Center Coordinator

Brenda Villwock

Web Page

Anita Marco

Bible Study

Joan Delk

Room Parent Coordinators

ESHD– Dawn Reed

LS– Nancy Kasselmann

Connect Event Coordinator

Karen Pardue

Rewards Programs

Gay Lynn Morrison

Box Tops for Education

Sharman Gray

Sunshine Parent

Deannie delaGuardia

MS Grade Level Reps

6th Grade—Vania Venizelos

7th Grade—Beth Tanzy & Margaret Gibson

8th Grade—Mimi Doss

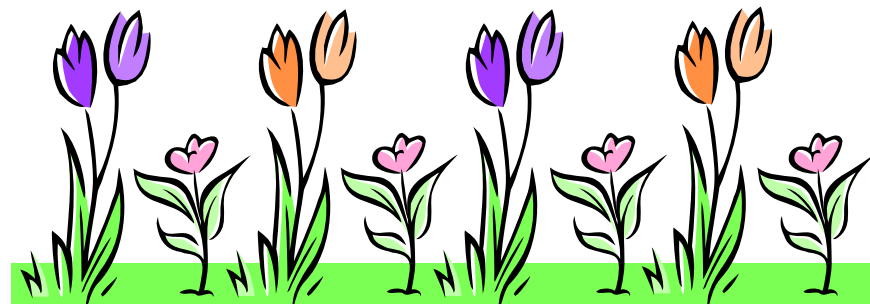
US Grade Level Reps

9th Grade—Kelly Steinbaum

10th Grade—Pam Starke & Teri Hudgins

11th Grade—Deannie delaGuardia

12th Grade—Mary Janico & Lynn Salyers



P.A.L.S

.....

9820 Nesbit Ferry Road
Johns Creek, GA 30022
www.experiencepisgah.org

Inside this
issue:

Letter from the Pres.	1
Looking Back	2
Looking Forward	2
PALS Calendar	3
2009-10 Coordinators	4

What's New with PALS...

Parents Are Loyal Supporters

SUMMER 2009 ISSUE

Letter from the President...heading into Fall 2009!

Summer is winding down which means school is right around the corner! Our goal is to have each and every one of you be an active member of PALS. We believe the positive support parents provide is the foundation for our unparalleled growth and development as a school of excellence. This year we are adding several new opportunities for parents to become involved. Our new Connect Events Committee, headed by LS parent Karen Pardue, is preparing for several All School events. We want to bring opportunities for entire families to connect with fellow students and parents at organized and fun events such as a Back to School Concert, Chick-Fil-A nights, and Trunk or Treat, to name a few. Additionally, one of Pisgah's favorite old traditions is expanding! The School Store now has a new location on the South Campus. This new permanent site allows us to open the store on more days and expand the inventory to include school logo items! Be watching for more exciting details about Connect Events and the School Store!

I would like to thank all of the parents and coordinators who made last year an huge success for PALS. I am looking forward to this school year to see what God has planned for PALS and you. Be prepared to be amazed!

Patti Pease

How can you become involved? Look for opportunities to serve in our newsletters, ParentsWeb, at Curriculum nights, and announcements from Room Moms (ES/LS) and Grade Level Reps (MS/US). We would love to hear from you soon: pals@mountpisgahschool.org.



Save the Date.....

Back to School Concert

Saturday, August 22nd

7:00pm East Campus

**Featuring our own LS/MS parent
Jim Brown's band: Velvet Elvis.**

Looking Back—What PALS did in 2009

PALS enjoyed a great year working with Pisgah Parents in support of our school.

Some of the highlights from the 2008-09 school year included:

- * All That Jazz—a huge success raising over \$12,000 and revealing some awesome Jazz dancers!
- * Purchased a much needed medical cot for the school clinic.
- * Contributed to the “Happy” Science Lab.
- * Provided the inflatable for the LS field day.
- * Hosted the retirement reception for Mrs. Nasher who served our school with her love of music for over 23 years.
- * Purchased the materials for the kick-off of the Watch DOGS program.
- * Funded enrichment programs and field trips for all schools.
- * Treated teachers to a week of pampering and goodies during Teacher Appreciation Week.
- * Provided snacks and lunches during conferences and teacher work days.
- * Treated each new teacher with a \$50 gift card to help in setting up classrooms.
- * Hosted Back to School Picnics for all schools.
- * Established the “Sunshine” Coordinator position who is responsible for sending bibles to our soldiers in honor of deceased members of our Pisgah family.
- * Coordinated the collection of 943 boxes for Operation Christmas Child.

Looking Forward—What’s New for 2009-10

- * The School Store will be expanded and have a permanent site!
- * PALS will host our first Back to School Concert featuring our own LS/MS parent Jim Brown’s band: Velvet Elvis!
- * Chick-fil-A will host Pisgah Nights the fourth Monday of every month at the Rivermont restaurant location on Holcomb Bridge Road!
- * PALS will host Trunk or Treat this year!
- * Box Top collection proceeds will fund the replenishment of the LS Science Labs!

PALS 2009-10 Calendar

August

- 12th—Back to School Picnics LS, MS, US
- 22nd—Back to School Concert All School
- 24th—Pisgah Chick-fil-A Night All School
- 27th—Back to School Playground Popsicles ESHD
- 28th—Back to School Playground Popsicles ESHD

September

- 11th—Watch DOGS Donuts with Dad LS
- 14th—Monday Bible Study Begins All School
- 15th—Tuesday Bible Study Begins All School
- 21st—Pisgah Chick-fil-A Night All School

October

- 22nd—Teacher Appreciation Day All School
- 26th—Pisgah Chick-fil-A Night All School
- 30th—Trunk or Treat ESHD, ESFD, LS

November

- 19th—Teacher Appreciation Day All School
- 23rd—Pisgah Chick-fil-A Night All School
- 24th—Thankful Tuesday LS

January

- 8th—Watch DOGS Donuts with Dad LS
- 25th—Pisgah Chick-fil-A Night All School
- 25th—Monday Bible Study Begins All School
- 26th—Tuesday Bible Study Begins All School

February

- 11th—Teacher Appreciation Day All School
- 22nd—Pisgah Chick-fil-A Night All School

March

- 22nd—Pisgah Chick-fil-A Night All School
- 25th—Teacher Appreciation Day All School

April

- 22nd—Teacher Appreciation Day All School
- 26th—Pisgah Chick-fil-A Night All School



PALS Executive Committee 2009-10

- President—Patti Pease
- Secretary/Treasurer—Rhonda Dalton
- US President—Vickie Parker
- MS President—Patti Juliano
- LS President—Kim Mellott
- ESHG President—Keri Morel
- ESFD President—Keisha Childress

MS/US Media Volunteers Needed

Volunteers are needed to staff the MS/US Media Center for the upcoming school year. Workload is light but the benefits are many. Volunteers are needed on Monday, Tuesday, Thursday and Fridays from 10-11:30pm. Look for more details and opportunities to sign-up this Fall.